

Preliminary Alternatives

- Improved 5-Leg Intersection
- Four-Leg Intersection
- Roundabout Intersection

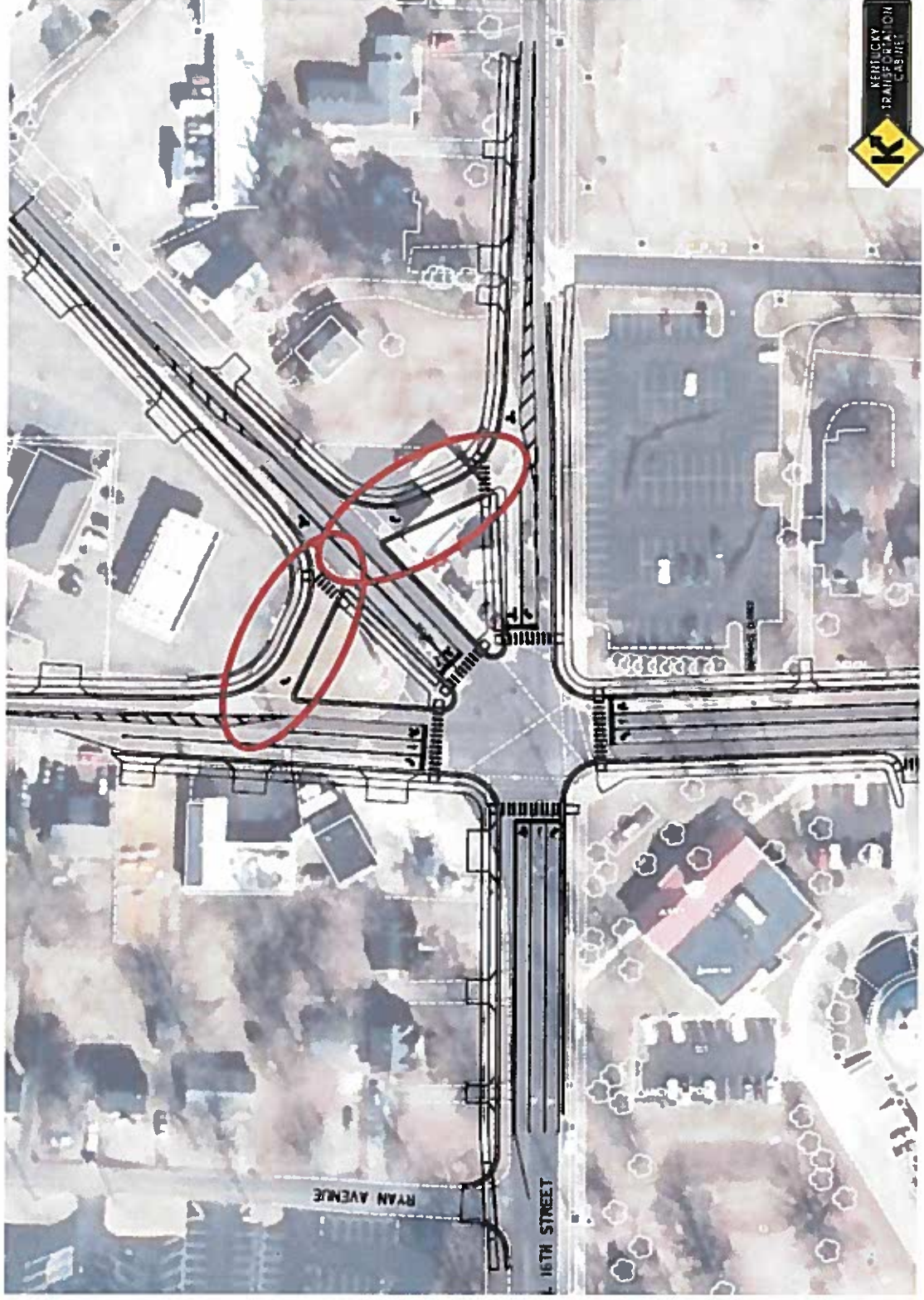


Improved 5-Leg Intersection

- Add necessary turn lanes
- Signal modifications to reduced to three phases
 - No Right Turn On Red – Multiple Approaches
- Increases pedestrian connectivity
 - Still some difficulties with 5th leg
 - Needs exclusive pedestrian phase
- Reduces project area
 - Length of street work
 - Right-of-Way



Improved 5-Leg Intersection



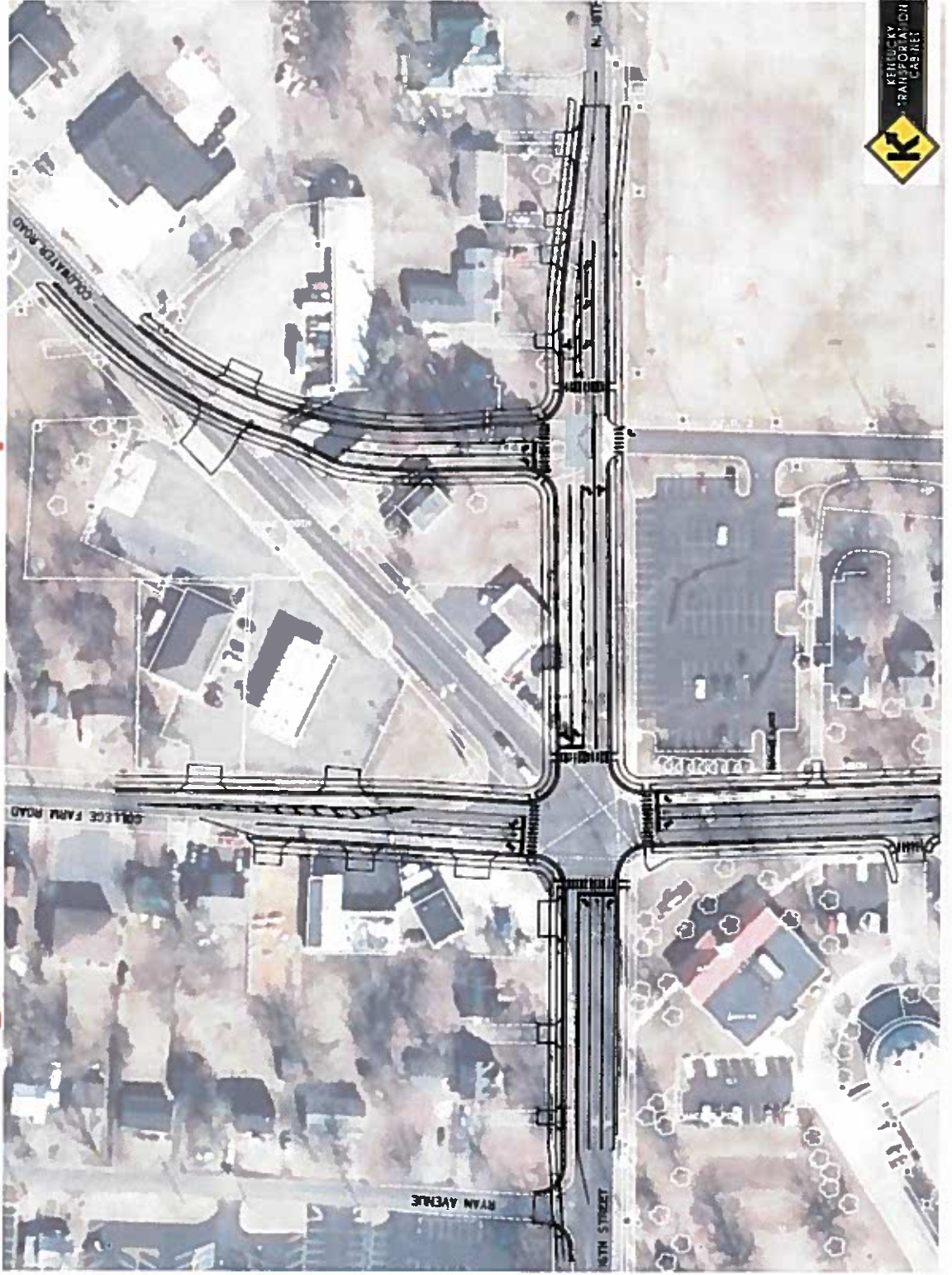
Four-Leg Intersection Options

- Connect Coldwater to 16th Street
- Two Closely Spaced Intersections
- One Traffic Signal
- Smaller Footprint
- Less Right-of-Way



URS

Four-Leg Intersection Options



URS

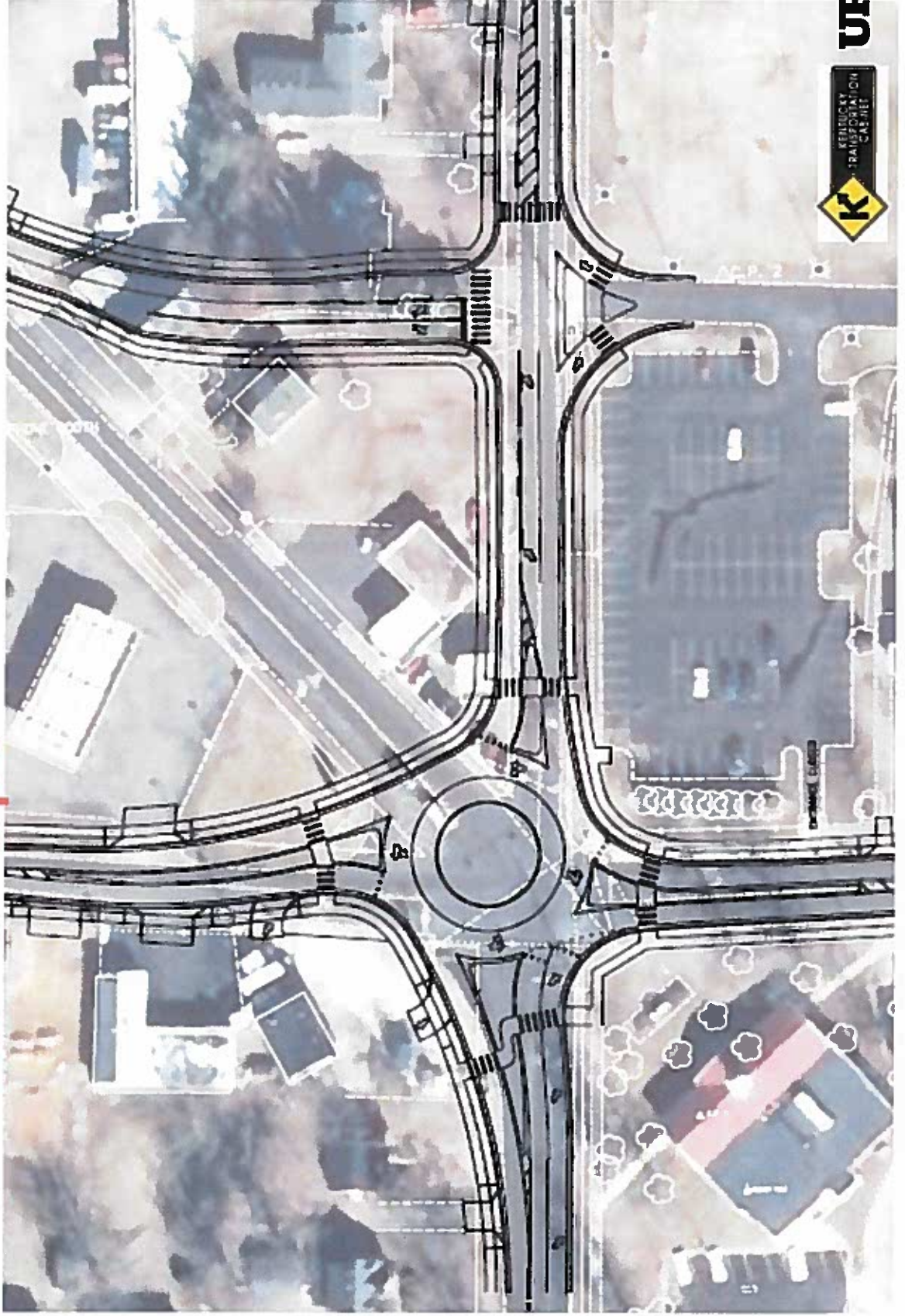
Roundabout Options

- Revised Policy on Roundabouts
- Simple, Single Lane Roundabouts
- Reevaluated Intersection as Single Lane Roundabouts
 - 4-leg
 - 5-leg
- Both Have Acceptable Circulating Capacities in Future



URS

Roundabout Option



URS

Decision Factors

Alternative	Utility Impacts	ROW Area	Construction Estimate
Improved 5-Leg	Most	32,000-42,000 SF	\$1.62M
4-Leg w/ Connector	Most	57,000-61,700 SF	\$1.71M
4-leg Roundabout	Medium	51,300 SF	\$1.57M

Alternative	Project Length	Paved Area	Pedestrian Safety	Traffic Operations
Improved 5-Leg	Longest	\$609,000	Good	Good
4-Leg w/ Connector	Medium	\$696,000	Better	Better
4-leg Roundabout	Shortest	\$551,000	Best	Best



URS